



TSHC
Teaching School Hubs Council

The Role and Evolution of TSHs: Providing local access to national reforms

Richard Gill, Chair, TSHC
21 September 2022

TSH policy: the case for change

Teaching Schools (2011-2021)

700+ across England

No boundaries - no firm school to TS link

Remit covering SI, PD and more

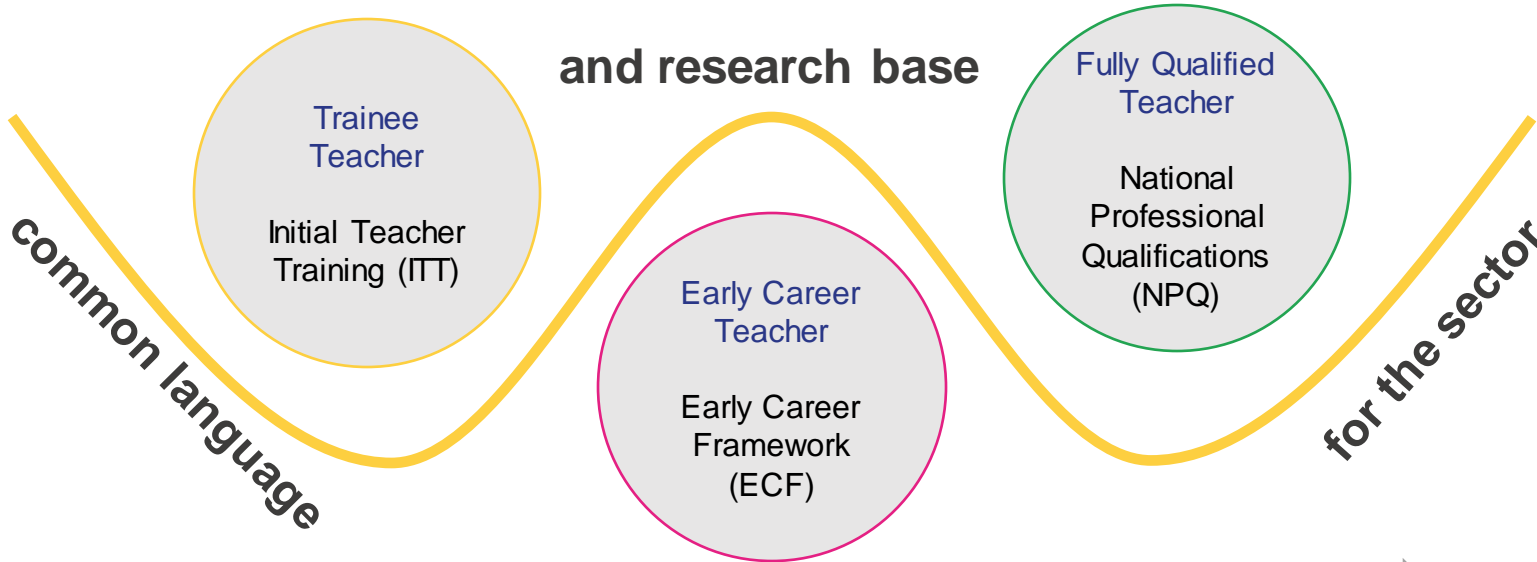
Teaching School Hubs (2021+)

87 new Teaching School Hubs

England divided into hub areas

Tight remit - teacher & leader development (ECF, NPQ, ITT)

The golden thread of professional development

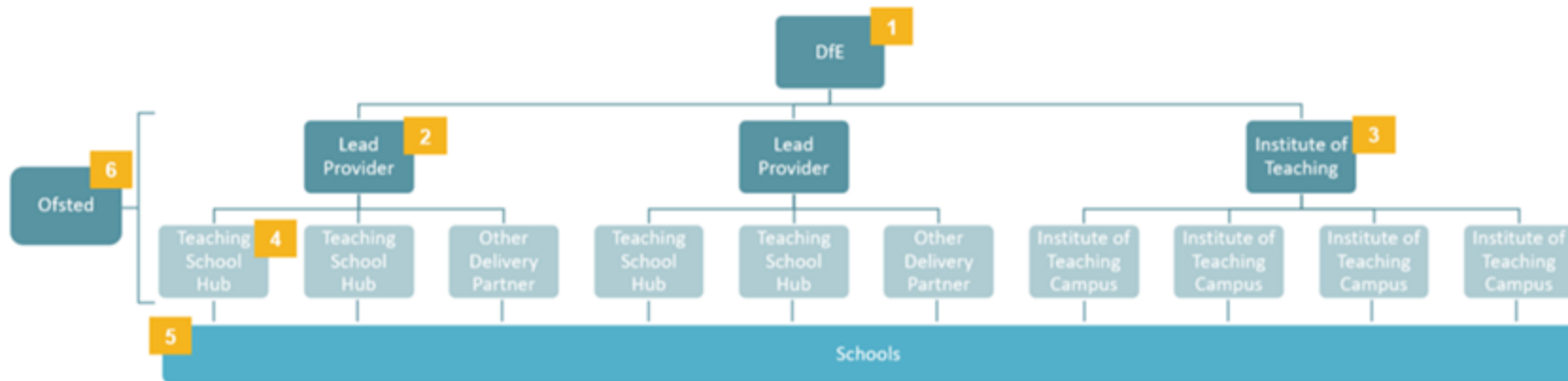


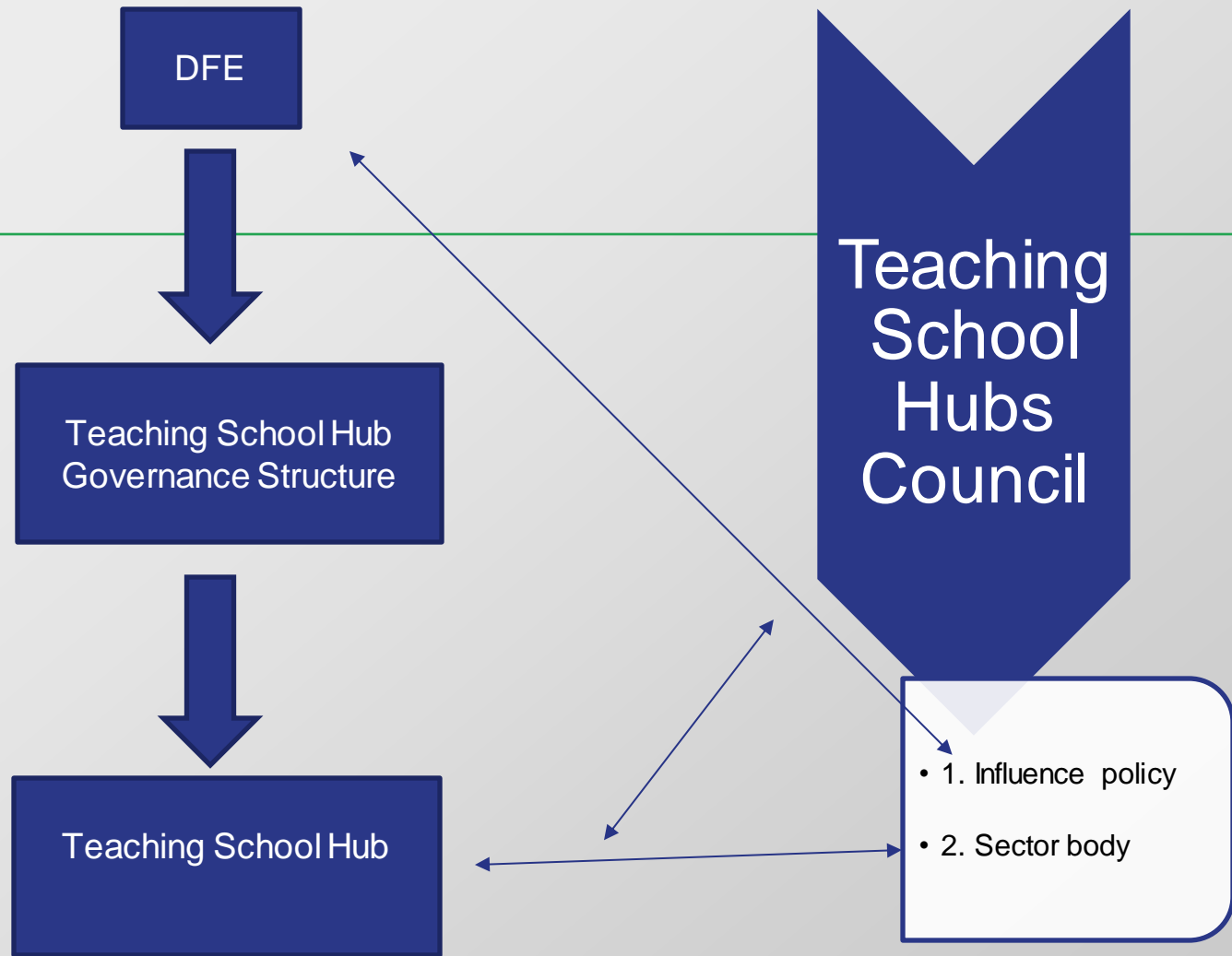
Continuing Professional Development

Appropriate Body services

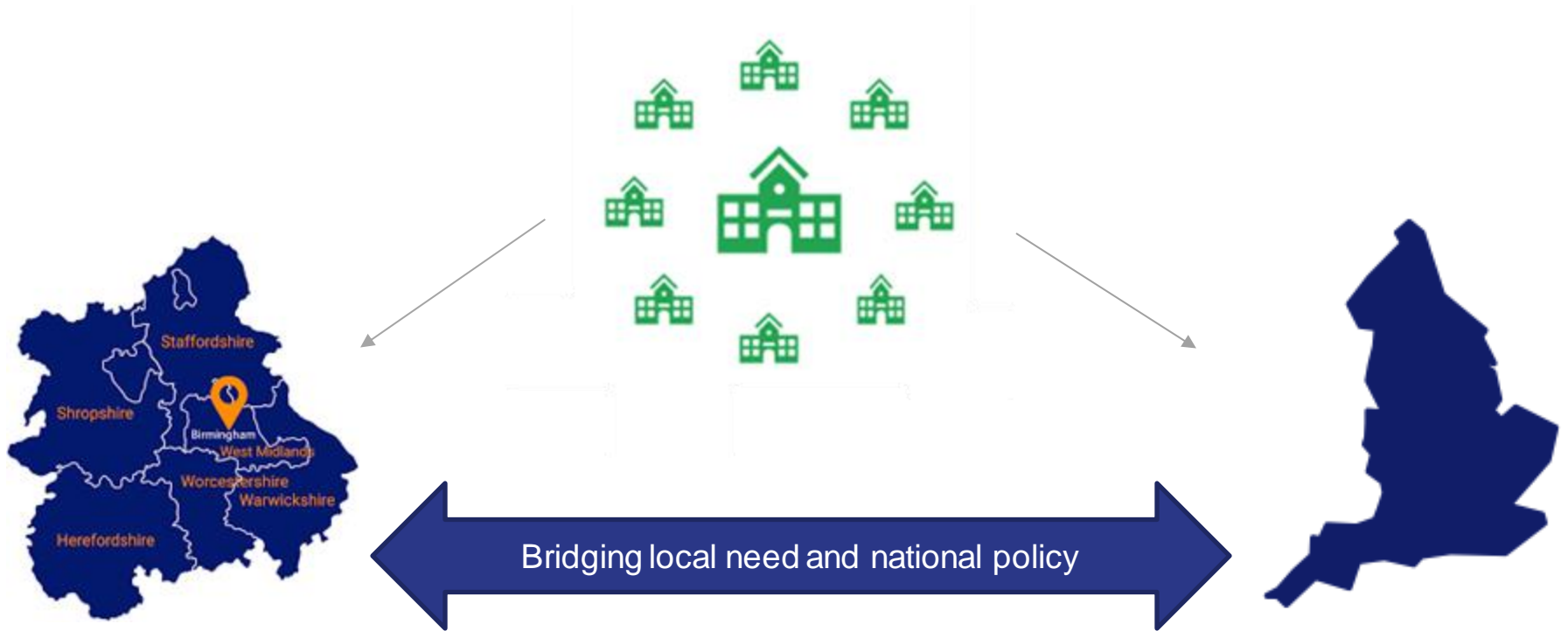
‘World-class teacher development requires world-class delivery’.

- 1 **DfE** created evidence informed frameworks, validated by the Education Endowment Foundation (EEF).
- 2 **ECF and NPQ Lead Providers** built on these frameworks to create evidence-informed curricula and establish national alliances of delivery partners.
- 3 From September 2022, the DfE will establish the **Institute of Teaching**, England’s flagship teacher training and development provider.
- 4 **Delivery partners** will work with Lead Providers to deliver programmes across an area. **Teaching School Hubs** will be the backbone of these.
- 5 **Schools** choose their delivery partner and work with them.
- 6 **Ofsted** inspects Lead Providers and their delivery partners to drive up quality.





School-led centres of excellence for teacher and leadership training and development



Thank you!



www.tshc.org.uk



tsh.support@tshc.org.uk richard.gill@atlp.org.uk

