

**Including all students as
musicians in
Whole Class Ensemble Teaching**

Katie Hasler

Head of Music, Woodford County High School

How it works at Woodford County High School



How it is embedded into the curriculum

Year 8 Brass Homework Sheet 5

Tempo and Mood

Read the other side first before answering the questions

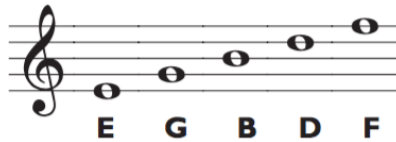
1) Number these tempo markings in order, where 1=fastest and 7=slowest:

TREBLE CL

Musical notation uses the first 7 letters of the alphabet to name the notes on the staff in steps like this:



First let's look at the names of the notes on the staff:



A useful phrase for remembering the names of the notes is:
Every Good Boy Deserves Football.

• Think of your own phrase to help you remember the names of the notes.

E G B

Now try to name these notes:



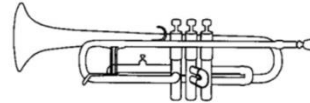
Year 8 Brass Project

Homework Sheet 6

Brass Instruments

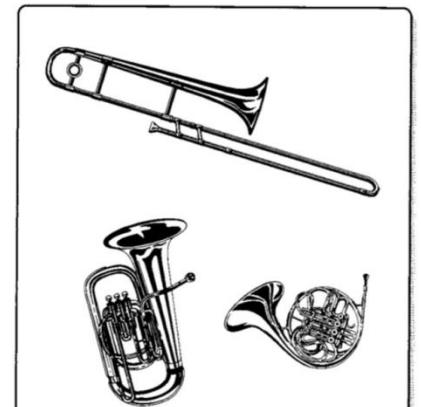
2) Q1) Copy the diagram of the trumpet (a quick rough sketch is fine) and label these parts:

- a) bell
- b) mouthpiece
- c) valves



3) Q2) Copy out this table and complete it by matching the names to the pictures.

INSTRUMENT	
	Tuba
	Trombone
	Trumpet



How it is embedded into the curriculum

Teacher Assessment

Tone Quality		Teacher Assessment (✓, +, -)
1	All of the notes that I play are clear, and well-tongued. I have good control over the sound that I produce on my instrument.	
2	Most of the notes that I play are clear, and not fuzzy or wobbly. I mostly tongue notes correctly, and have fairly good control over the sound that I produce on my instrument.	
3	Some of the notes that I play are clear. I am not yet tonguing notes correctly, and am still working on controlling the sound that I produce on my instrument.	

Range		Teacher Assessment (✓, +, -)
1	I can play a wide range of notes (more than C-G) accurately and in tune.	
2	I can play the notes C-G accurately, and mostly in tune.	
3	I can play at least three notes accurately, and mostly in tune, but am still working to reach all of the notes from C to G.	

Music Reading		Teacher Assessment (✓, +, -)
1	I can read the music for the assessment entirely accurately.	
2	I can read the music for the assessment accurately, using the right fingering and holding the notes for the correct number of beats, and make only a few mistakes.	
3	I can read the music for the assessment mostly accurately, but make more than one or two mistakes with my reading or fingering as I am playing.	

How it is embedded into the extra-curricular programme





Inclusivity issues

Considerations and support

Any questions?